

Stash Buster Scarf

This pattern is the one I used to make the pinks and purple scarf shown in the picture. The pattern is fully flexible for you to be able to customize the design to suit your taste or to suit the yarn quantities you have available!



Stitches Used - UK crochet terms (US terms in brackets)

CH = Chain

DC = Double Crochet (US - Single Crochet)

Tr = Treble Crochet (US - Double Crochet)

There are only three stitches in the basic scarf but you could add in other stitches if you wanted for a bit of variety or to change the appearance of the scarf. Lacy/open stitches would also change the weight of the piece.

Yarn

The Yarn weight used in this pattern is Double Knitting weight. Other weights of yarn could be used - just adjust the number of stitches to give the size required.

The first time I made this scarf I used oddments I had of a cashmere and merino wool yarn but you could use any yarn you have available in a DK weight. I remade the scarf in Stylecraft DK so that I could calculate the weight of yarn required.



The basic pattern uses five colours as follows:

Colour A	Powder	55g
Colour B	Navy	35g
Colour C	White	35g
Colour D	Turquoise	25g
Colour E	Teal	40g

First row - In yarn colour A, Chain 334.

TIP - focus on getting an even tension as these stitches will form the edge of the scarf and it will look neater if they are uniform in size. Do not be afraid to pull stitches out and redo them if you are finding them uneven at any point.

Customisable options - the length of chain you work will be the length of the finished scarf so try it on for size and keep going until you feel you have the length you want.

Row 2 - continue with A - DC into the third stitch from the hook ie miss out two chains then DC into the next stitch. DC to the end of the row.

TIP - for the best and neatest edge be careful to work each DC into the same part of each chain stitch! Again keep looking at the work you are producing and do not be afraid to pull a section back out if it does not lie flat or is not looking right. Trust me - if you carry on and finish the scarf and it has a section you are not happy with you will really regret not going back!

Row 3 - join in Yarn B. Leaving a tail of yarn c 12 inches, CH2, DC into the top of the last stitch on the previous row. DC to the end.

TIP - At the end of each row where you join in the new colour leave a tail of a reasonable length - I went for about 12 inches/30 cms. Don't knot the new yarn in - you will only have to undo those knots later. Just start with the new colour and chain three for a row of Trebles, chain 2 if you are starting a row of DC. The length of the tail you leave will restrict the length of the fringing on the finished scarf so do not cut these too short.

Row 4 - join in Yarn C. CH2, DC into the top of the last stitch on the previous row. DC to the end.

TIP - when you come to work in a yarn you have already used you should find that the ball of that colour is already waiting at the end you are starting from. I did not cut the yarn at this point I left a loop of c 24 inches/ 60 cms. Again the length of this tail of yarn will limit the fringing that you have on the finished scarf.

Row 5 - pick up Yarn A. Leaving a long loop of yarn, CH3, work Tr into the top of the last stitch on the previous row. Continue working Tr to the end of the row.

Row 6 - pick up Yarn B. Leaving a long loop of yarn, CH2, DC into the top of the last stitch on the previous row. DC to the end.

Row 7 - pick up Yarn C. Leaving a long loop of yarn, CH3, work Tr into the top of the last stitch on the previous row. Continue working Tr to the end of the row.

Row 8 - join in yarn D. Leaving a tail of yarn c 12 inches, CH2, DC into the top of the last stitch on the previous row. DC to the end.

Continue in this method with the colours and stitches noted below.

Row 9 - Yarn B - DC

Row 10 - Yarn A - DC

Row 11 - Yarn E - Tr

Row 12 - Yarn C - DC

Row 13 - Yarn A - DC

Row 14 - Yarn E - DC

Row 15 - Yarn D - DC

Row 16 - Yarn B - Tr

Row 17 - Yarn E - DC

Row 18 - Yarn A - DC

Row 19 - Yarn C - Tr

Row 20 - Yarn E - DC

Row 21 - Yarn B - DC

Row 22 - Yarn D - DC

Row 23 - Yarn A - Tr

Row 24 - Yarn C - DC

Row 25 - Yarn D - DC

Row 26 - Yarn B - DC

Row 27 - Yarn E - Tr

Row 28 - Yarn A - DC

Row 29 - Yarn B - DC

Row 30 - Yarn D - DC

Row 31 - Yarn C - DC

Row 32 - Yarn A - DC

TIP - again watch your tension especially on the last row as this will form the edge of the scarf. Do not be afraid to pull out any stitches where the tension is irregular and rework them until you are happy with the appearance. The extra care will be worth it in the finished product.

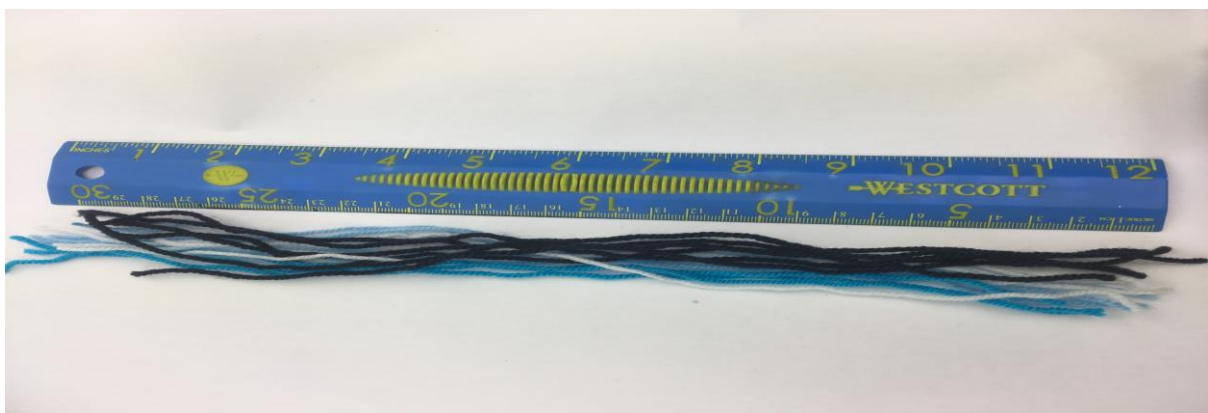
Finishing off. When you complete the last row the end of the scarf will look something like this...



Tease out all the ends until they are lying straight and cut them to six inches/15cms across.



Cut 12 inch/30cm lengths of yarn in any colours you like ready to add in to the fringing to sit alongside the tails of yarn you created as you worked. TIP when selecting colours to add in to the fringe I looked to keep the overall colours even so I separated out the ends that were there into eight groups then added in the colours that were missing from each group.



Group the strands evenly along the edge into eight groups. Insert the additional strands, I added two to each group. There is no need to fasten these in - they will be

held in by the large knots - simply pull through to even up the ends with the existing fringing.



Tie into large knots pulled close to the edge of the work. There is no need to fasten any ends in on this project - the knots will keep these ends secure.



And you are done..... HAPPY CROCHETING 😊